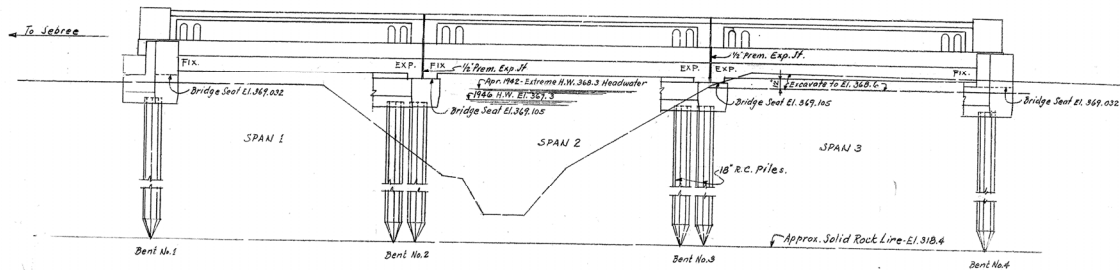


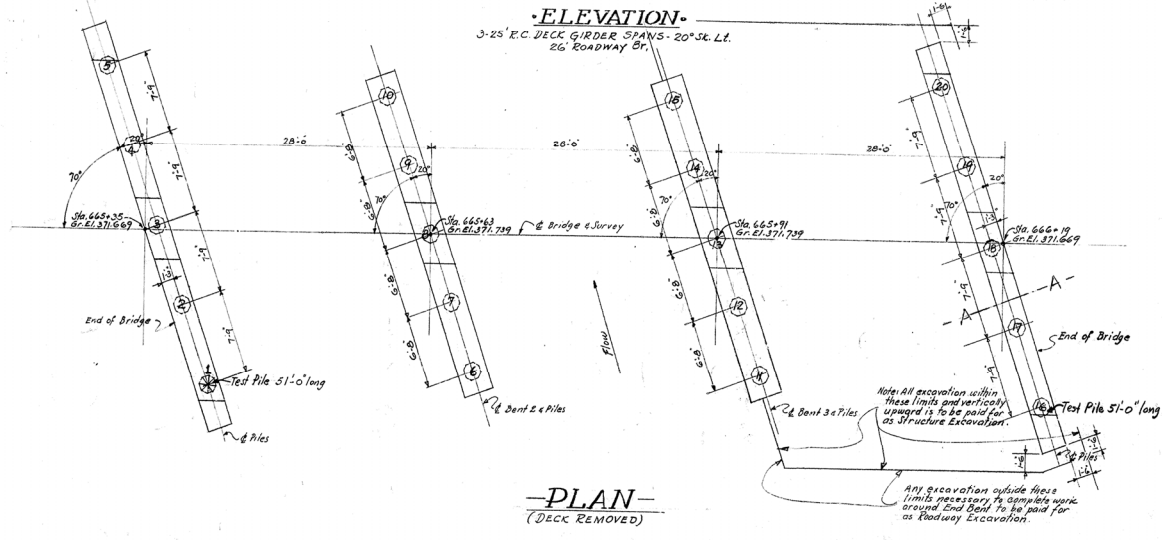
REV.	DATE	BY	CHK'D	DATE	BY
1					



GENERAL NOTES

Specifications: Kentucky Department of Highways (KAS Standard with Amendments)
Design Load: Bridge designed for 420-516 Loading as specified in KASHO, 1944 Specifications
Concrete: Class "A" Concrete to be used throughout except in Handrail & Piles, Class "B" Concrete to be used in Handrail & Piles.
Reinforcement: Dimensions shown from face of concrete are clear distances except as otherwise shown. Dimensions for bar spacing are distances as shown.
C.I. Drains, Expansion Joint Material, Copper Strips & Tor Paper: The cost of these items to be included in the unit price bid for Class "A" Concrete.
Piling: Piles to be driven to refusal or to sustain a minimum load of 50 Tons per Pile. Test Pile to determine length of piles required shall be driven at location shown. Test Pile shall be accurately located so as to be used in the finished structure. To be commercial grade pipe or casing pile approximately 1/4" thick.
Tor Paper: All edges to be beveled 1/4" unless otherwise shown.
Beveled Edges

ELEVATION
 3-25" R.C. DECK GIRDER SPANS - 20'36" LL.
 26' Roadway Cr.



REFERENCES & ESTIMATE OF QUANTITIES

Item	Drawing No.	Concrete cu. Yds. Class "A"	Reinforcement lbs.	C.I. Drains Linear Feet	Structure Excavation cu. Yds.
Layout Sheet	Sheet 1				
Bent No. 1	2	12.3	1270	255	245
" 2	2	8.5	840	255	245
" 3	2	8.5	820	255	245
" 4	2	12.3	1270	255	245
Span No. 1	3	38.4	1280		
" 2	3	37.4	12740		
" 3	3	38.4	12800		
Handrail	4			8.3	1840
Table of Elevations	5				
Pile Records	1 - P1				
Total		155.8	8.3	44380	1020
				980	140

BILL OF INCIDENTAL MATERIAL

ITEM	No. of Pcs.	Size & Description	Location
Prim. Exp. Material	1	1/2" x 1/2" x 29'-5"	Bent 2
"	1	1/2" x 1/2" x 30'-0"	Bent 3
"	2	1/2" x 1/2" x 27'-0"	Bent 1 & 2
"	4	1/2" x 1/2" x 2'-7"	Curbs
"	4	1/2" x 2'-8" x 3"	Bent 1 & 4
Cast Iron Drains	6	See Sheet 5	
Copper Strips	2	1/2" x 32'-6" long	Joint between 2 & 3

For detail of Copper Strip see Job Day 620

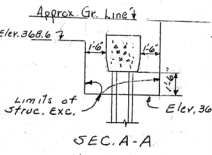
Quantities shown in this Bill of Incidental Material are approximate only, and the Contractor shall be responsible for furnishing sufficient material to complete the work in accordance with plans and specifications.

PLAN
 (DECK REMOVED)

PILE RECORD

BENT No. 1				BENT No. 2				BENT No. 3				BENT No. 4							
Pile No.	Cutoff Elev. as shown on plans	Tip Pile Elev. as driven	Length of Pile in place Bearing Capacity in ft.	Calculated Tons	Pile No.	Cutoff Elev. as shown on plans	Tip Pile Elev. as driven	Length of Pile in place Bearing Capacity in ft.	Calculated Tons	Pile No.	Cutoff Elev. as shown on plans	Tip Pile Elev. as driven	Length of Pile in place Bearing Capacity in ft.	Calculated Tons	Pile No.	Cutoff Elev. as shown on plans	Tip Pile Elev. as driven	Length of Pile in place Bearing Capacity in ft.	Calculated Tons
1	367.032	316.210	48.822	Refusal	6	367.105	318.280	48.825	Refusal	11	367.105	317.300	47.805	133.3	16	367.032	319.000	48.032	Refusal
2	367.032	316.260	48.032	"	7	367.105	316.380	48.725	"	12	367.105	319.530	47.575	133.3	17	367.032	318.800	48.232	133.3
3	367.032	321.140	44.892	25.0	8	367.105	318.120	48.985	"	13	367.105	319.580	47.525	133.3	18	367.032	319.760	47.272	133.3
4	367.032	318.080	48.952	Refusal	9	367.105	318.530	48.575	"	14	367.105	318.240	48.865	133.3	19	367.032	320.450	46.582	133.3
5	367.032	330.100	46.932	100.0	10	367.105	318.570	47.535	"	15	367.105	318.720	48.385	133.3	20	367.032	319.500	47.532	Refusal

Note: The above listed data does not replace other records on piles required to be kept and submitted by the Resident Engr. After all Piles have been driven, the Res. Engr. shall record the Tip of Pile Elev. as driven, Length of Pile in place & Calculated bearing capacity of each Pile & before one day final copy of this sheet with this information to the Bridge Engr., so the record can be placed on original plans. End of Pile in place shown hereon is the actual length of Pile in the finished structure below cutoff Elevation and is not necessarily the pay item.

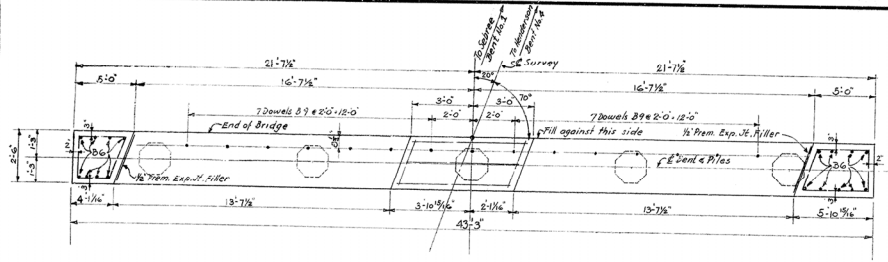


FLAM Ditch
 Sheet of 5
 G-351
 P1

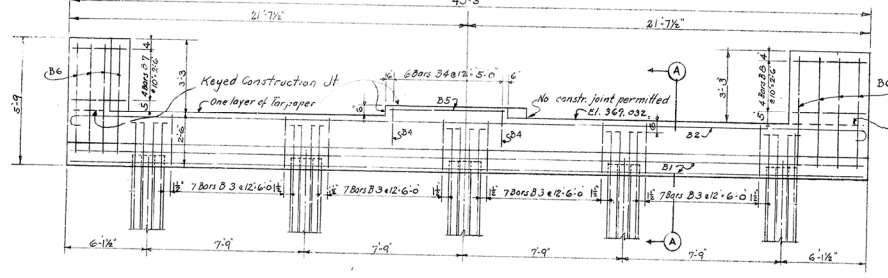
COMMONWEALTH OF KENTUCKY
 DEPARTMENT OF HIGHWAYS
 FRANKFORT
 COUNTY OF
HENDERSON
 SEBREE HENDERSON

ROAD
 STATION 66.9+77 PROJECT NO.
 BRIDGE NUMBER MP 51-299-1 DRAWING NO. 8049

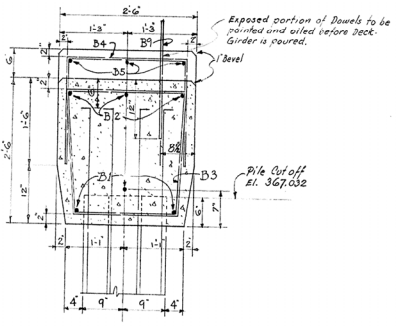
DESIGNED BY: [Signature]
 CHECKED BY: [Signature]
 DATE: [Date]
 REVISIONS: [Table]
 APPROVED BY: [Signature]
 DATE: [Date]



PLAN OF CAP



FRONT ELEVATION



SECTION A-A

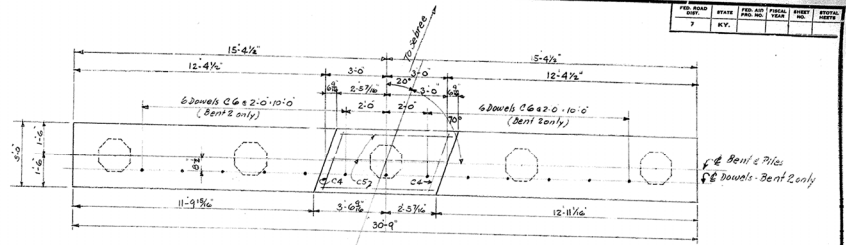
BILL OF REINFORCEMENT (One Bent)

Mark	Type	No.	Size	Length	Location	ft	in	ft	in
B1	Str.	3	1 1/2	42	Cap	-	-	-	-
B2	(1)	3	4.5	1	-	-	-	-	-
B3	(2)	28	3/8	9	0	-	-	-	-
B4	(3)	6	6	11	Haunch	-	-	-	-
B5	Str.	3	5	8	-	-	-	-	-
B6	-	17	5	4	Wings	-	-	-	-
B7	(4)	4	13	3	-	4	7	3	10 1/4
B8	-	4	15	1	-	5	6	4	9 1/4
B9	Str.	15	1/2	2	Dowels	-	-	-	-

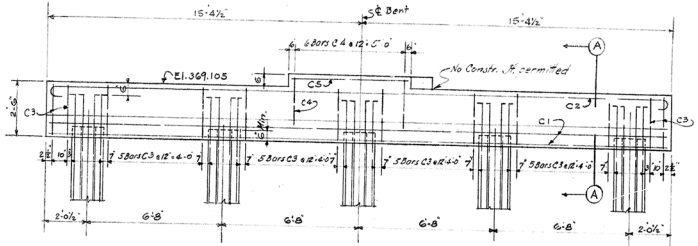
ESTIMATE OF QUANTITIES (One Bent)

Concrete Class 'A' 12.3 cu yds.
 Reinforcement 1270 lbs.

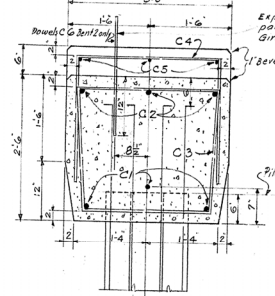
BENT 1 & 4



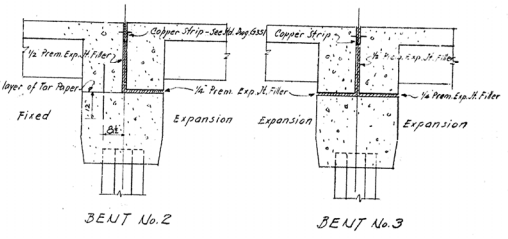
PLAN OF CAP



ELEVATION



SECTION A-A



ESTIMATE OF QUANTITIES

Bent No. 2
 Concrete Class 'A' 8.5 cu yds.
 Reinforcement 840 lbs

Bent No. 3
 Concrete Class 'A' 8.5 cu yds.
 Reinforcement 820 lbs

BENT 2 & 3

BILL OF REINFORCEMENT

Mark	Type	Number	Size	Length	Location
C1	Str.	3	3	30	Cap
C2	(1)	3	3	32	-
C3	(2)	24	3/8	10	-
C4	(3)	6	6	7	Haunch
C5	Str.	3	3	5	-
C6	-	13	1/2	2	Dowels

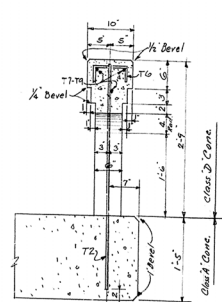
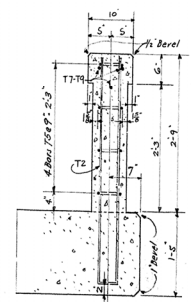
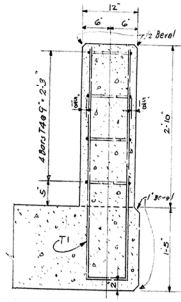
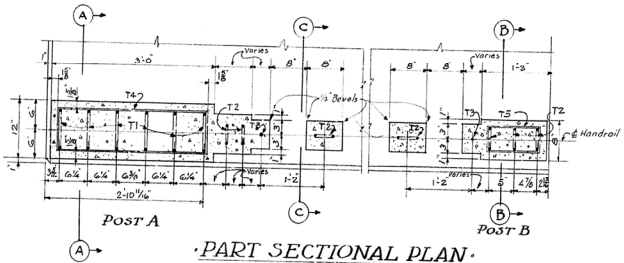
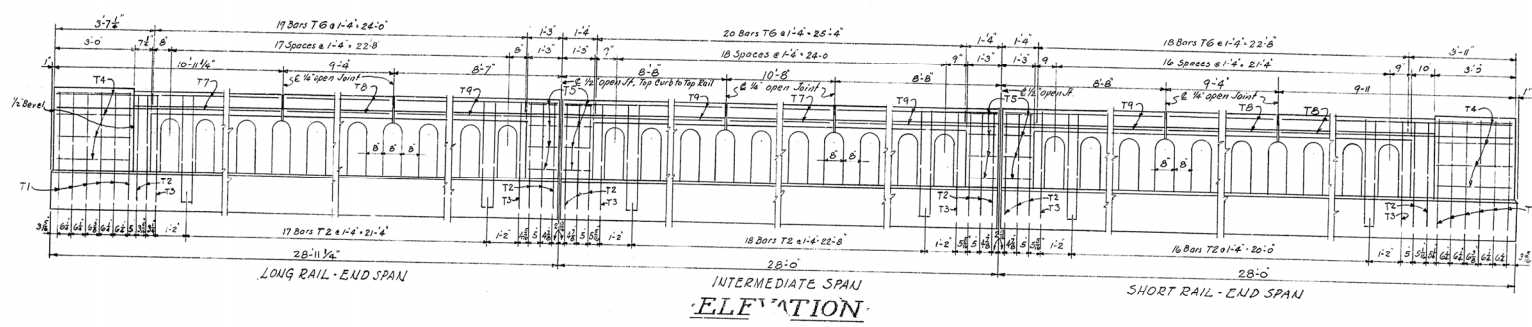
Sheet 2

COMMONWEALTH OF KENTUCKY
 DEPARTMENT OF HIGHWAYS
 FRANKFORT
 COUNTY OF
HENDERSON
 SEBREE-HENDERSON
 ROAD

STATION 665+77 PROJECT NO.
 BRIDGE NUMBER 51-299-1 DRAWING INDEX
 no. 0069

DESIGNED BY: [Signature] DATE: []
 CHECKED BY: [Signature] DATE: []
 REVISIONS: []
 APPROVED BY: [Signature] DATE: []

REV. NO.	DATE	BY	CHKD.	APP'D.	REASON
1					

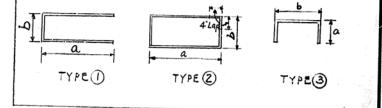


Note: All exposed edges to be beveled 1/2" unless otherwise noted.

HANDRAIL

BILL OF REINFORCEMENT (one span)

Mark	Type	Number	Size	Location	a	b	c
T1	①	12	7/8"	Post A	3	11 1/2"	0
T2	-	43	4/8"	Post B - Spans	5	10 1/2"	0
T3	SH	4	4"	Spalls	-	-	-
T4	②	8	3/8"	Post A	2	8 1/2"	0
T5	-	8	1/2"	Post B	0	11 1/2"	0
T6	③	37	40	11 Roll	0	3	0
T7	SH	3	6"	"	-	-	-
T8	-	9	-	"	-	-	-
T9	-	6	12	"	-	-	-



ESTIMATE OF QUANTITIES

End Span (one span)

Concrete Class D	2.9 cu yds
Reinforcement	640 lbs

Interm. Span

Concrete Class D	2.5 cu yds.
Reinforcement	560 lbs.

Sheet 4

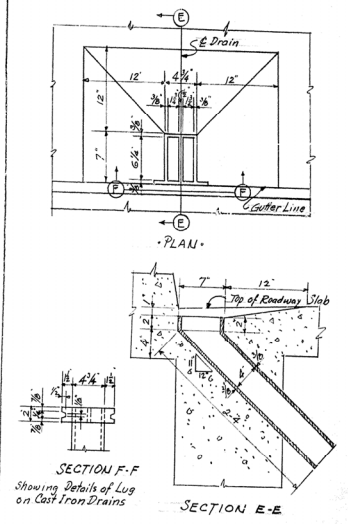
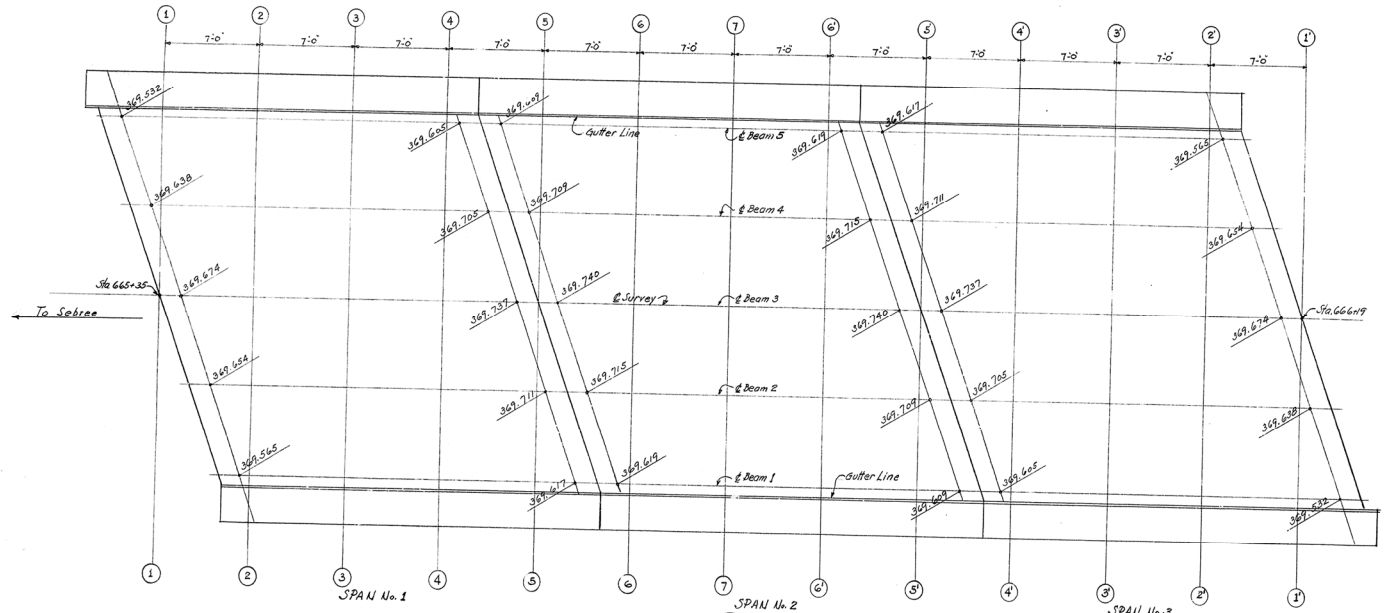
COMMONWEALTH OF KENTUCKY
DEPARTMENT OF HIGHWAYS
FRANKFORT
COUNTY OF
HENDERSON
SEBREE - HENDERSON

ROAD
STATION 665+77 PROJECT NO.

BRIDGE NUMBER	51-299-1	DRAWING	INDEX
		NO. 8669	

DESIGNED BY: [Signature] CHECKED BY: [Signature] DATE: []
 DETAILED BY: [Signature] REVIEWED BY: [Signature] DATE: []
 FACED BY: [Signature] CHECKED BY: [Signature] DATE: []

REV.	DATE	BY	CHKD.	APP'D.	REVISION
1					



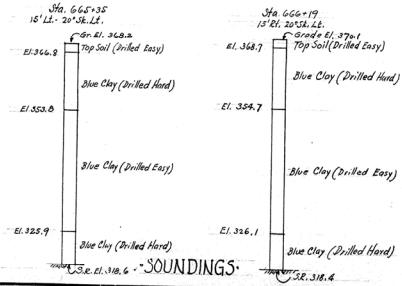
SECTION F-F
Showing Details of Lug
on Cast Iron Drains

SECTION E-E

DETAILS OF CAST IRON DRAINS.
Estimated height of one drain with skafed for filets - 52 lbs.
Foundry Note: All drains to be gray iron castings A.S.T.M. Specifications
A48-4 except that tensile and transverse tests are not required,
Form T-521. Report of field inspection of castings is to be submitted
to the Laboratory.

TABLE OF ELEVATIONS (Includes Permanent and Construction Camber)

SPAN 1										SPAN 2										SPAN 3													
Point	Top of Slab Gutter near Beam 1	Bottom of Beam 1	Top of Slab Bottom of Beam	Top of Slab Bottom of Beam	Top of Slab Bottom of Beam	Top of Slab Bottom of Beam	Top of Slab Bottom of Beam	Top of Slab Bottom of Beam	Top of Slab Bottom of Beam	Point	Top of Slab Gutter near Beam 1	Bottom of Beam 1	Top of Slab Bottom of Beam	Top of Slab Bottom of Beam	Top of Slab Bottom of Beam	Top of Slab Bottom of Beam	Top of Slab Bottom of Beam	Top of Slab Bottom of Beam	Top of Slab Bottom of Beam	Point	Top of Slab Gutter near Beam 1	Bottom of Beam 1	Top of Slab Bottom of Beam	Top of Slab Bottom of Beam	Top of Slab Bottom of Beam	Top of Slab Bottom of Beam	Top of Slab Bottom of Beam	Top of Slab Bottom of Beam	Top of Slab Bottom of Beam	Top of Slab Bottom of Beam			
End of Bridge	371.560	371.649	371.649	371.642	371.632	371.642	371.642	371.642	371.642	5-5	371.618	371.713	371.713	371.739	371.787	371.787	371.787	371.787	371.787	End of Bridge	371.618	371.707	371.707	371.739	371.787	371.787	371.787	371.787	371.787	371.787	371.787		
1-1										6-6	371.622	369.622	371.723	369.723	371.724	369.724	371.724	369.724	371.724	369.724	7-7	371.634	369.634	371.732	369.732	371.732	369.732	371.732	369.732	371.732	369.732	371.732	369.732
2-2	371.570	369.570	371.670	369.670	371.702	369.702	371.642	369.642	371.549	369.549	371.622	369.622	371.723	369.723	371.724	369.724	371.724	369.724	371.724	369.724	8-8	371.633	369.633	371.732	369.732	371.732	369.732	371.732	369.732	371.732	369.732	371.732	369.732
3-3	371.599	369.599	371.697	369.697	371.728	369.728	371.642	369.642	371.549	369.549	371.622	369.622	371.723	369.723	371.724	369.724	371.724	369.724	371.724	369.724	9-9	371.633	369.633	371.732	369.732	371.732	369.732	371.732	369.732	371.732	369.732	371.732	369.732
4-4	371.615	369.615	371.711	369.711	371.737	369.737	371.642	369.642	371.549	369.549	371.622	369.622	371.723	369.723	371.724	369.724	371.724	369.724	371.724	369.724	10-10	371.619	369.619	371.712	369.712	371.712	369.712	371.712	369.712	371.712	369.712	371.712	369.712
5-5	371.619	369.619	371.712	369.712	371.737	369.737	371.642	369.642	371.549	369.549	371.622	369.622	371.723	369.723	371.724	369.724	371.724	369.724	371.724	369.724	End of Bridge	371.618	369.618	371.707	369.707	371.707	369.707	371.707	369.707	371.707	369.707	371.707	369.707
6-6	371.618	369.618	371.713	369.713	371.739	369.739	371.642	369.642	371.549	369.549	371.622	369.622	371.723	369.723	371.724	369.724	371.724	369.724	371.724	369.724		371.618	369.618	371.707	369.707	371.707	369.707	371.707	369.707	371.707	369.707	371.707	369.707



ELEVATIONS & SOUNDINGS

Note: Elevations shown on this sheet are to be maintained with false work in place.

Sheet 5

COMMONWEALTH OF KENTUCKY
DEPARTMENT OF HIGHWAYS
FRANKFORT
COUNTY OF
HENDERSON
SEBREE - HENDERSON

ROAD
STATION 665+77
BRIDGE NUMBER 57-299-1
DRAWING NUMBER No. 8669
PROJECT NO.
INDEX

DESIGNED BY: [Signature]
CHECKED BY: [Signature]
DATE: [Date]
REVISIONS: [Table]

STA.	DATE	REV.	BY	CHKD.	DATE
7	Ky.				

GENERAL NOTE

CONSTRUCTION NOTE: This drawing to be used in conjunction with Standard Plans or Special Plans for concrete floors on bridges when so noted on the Standard or Special Plans.

The joint between the spans shall have the copper strip and premolded joint filler so placed as to prevent contact of concrete between spans and to provide the full width of joint shown on plans. The copper strip and premolded joint filler shall be accurately placed and rigidly held in correct position. The premolded filler on the roadway between curbs shall be trimmed or placed 1/8" below the concrete surface and sealed with asphaltic joint filler, as indicated on this drawing.

No direct payment will be made for material or installation of copper expansion strip and premolded expansion joint filler, the cost of these shall be included in the unit price bid for class A concrete.

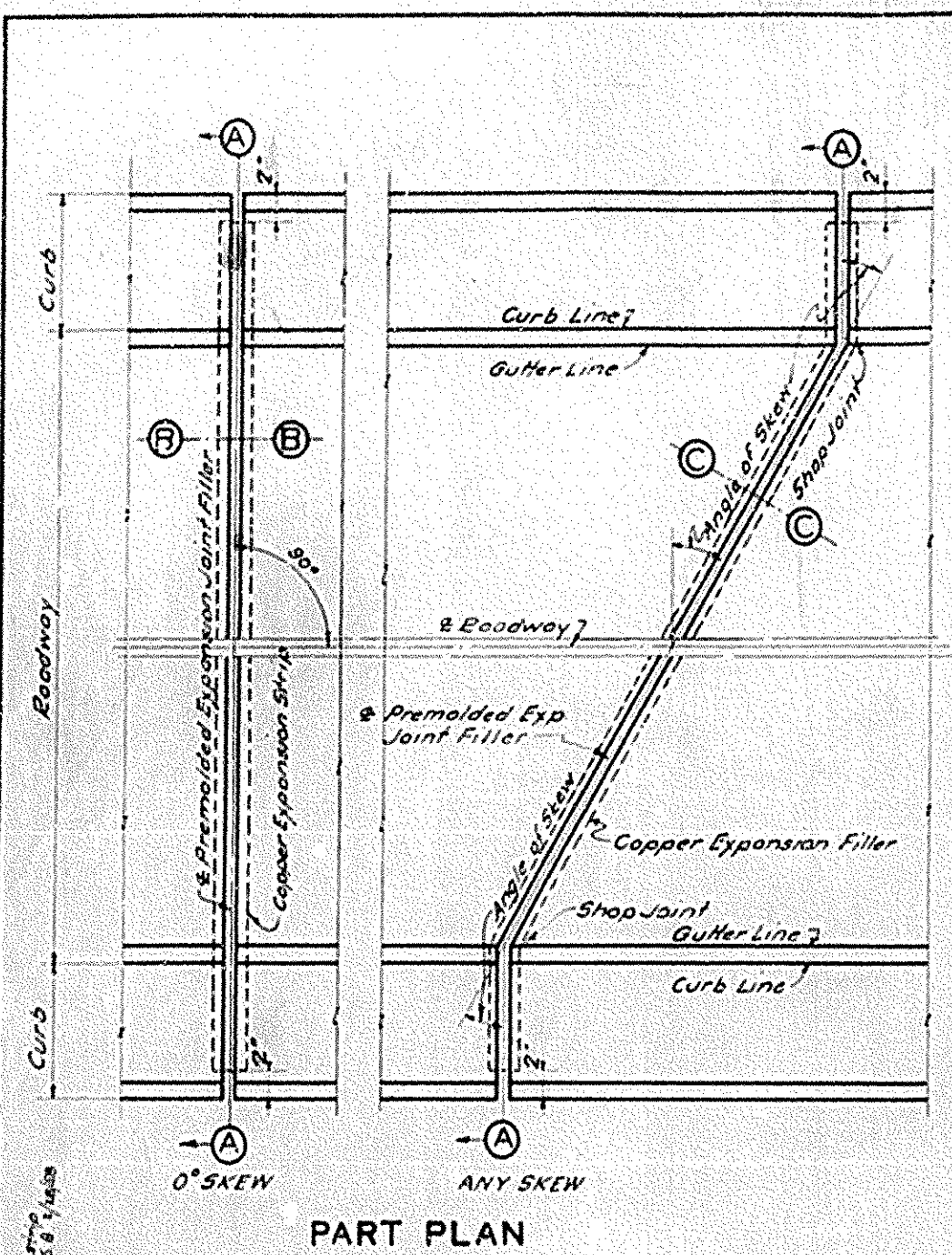
SPECIFICATIONS FOR PREMOLDED FILLER:

Premolded expansion joint filler shall conform to Section 7.25 of the 1956 Std. Specifications.

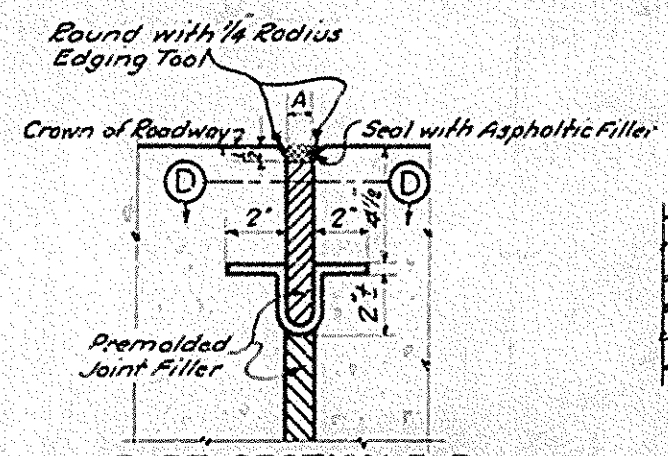
SPECIFICATIONS FOR ASPHALTIC FILLER: The Asphaltic Filler shall conform to the requirements of Section 7.26.2 of the Kentucky Department of Highways 1956 Standard Specifications, with Amendments.

SPECIFICATION FOR COPPER EXPANSION STRIP: The copper strips are to be 24 ounces soft sheet commercial grade A. Tolerance of 5% variation in weight above or below that specified will be allowed. The strips are to be shop fabricated to the section and dimensions shown. Field bending and fabrication will not be permitted except as provided hereon. Unless otherwise provided by plans, the strips may be furnished in one or two pieces. If furnished in two pieces the field joint shall be at the center line of roadway. Shop joints shall not be spaced closer than 6 feet unless otherwise shown on plans and shall be lock seam and soldered. The field joint of the center line of roadway may be a 2 inch width lap joint soldered. All joints shall be water tight.

On Skewed Spans the two copper strips are separate units and are not to be connected in any way that will prevent movement of the strips relative to each other. All points are to be located to allow free movement of the individual strips.



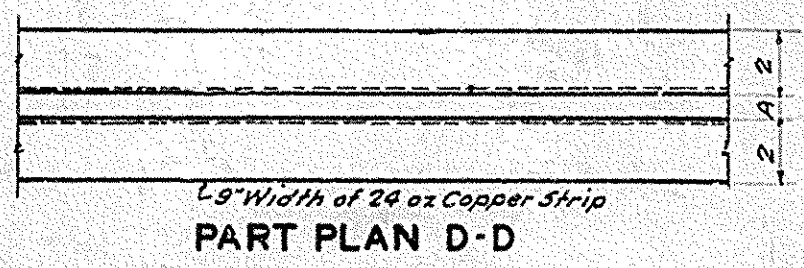
PART PLAN



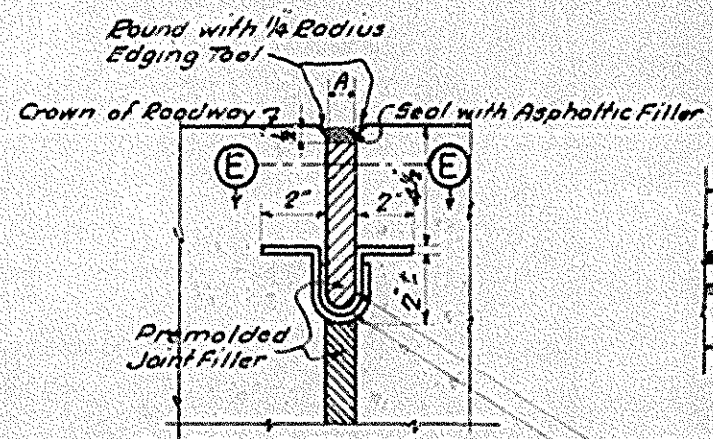
PART SECTION B-B

Dimension A shown on Drawings (On Straight Spans)

NOTE: Dimension A is inside dimension and is to be same as thickness shown on Drawings for Premolded Expansion Joint Filler.



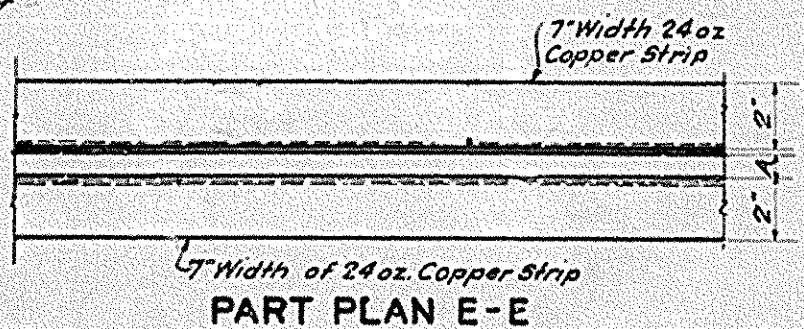
PART PLAN D-D



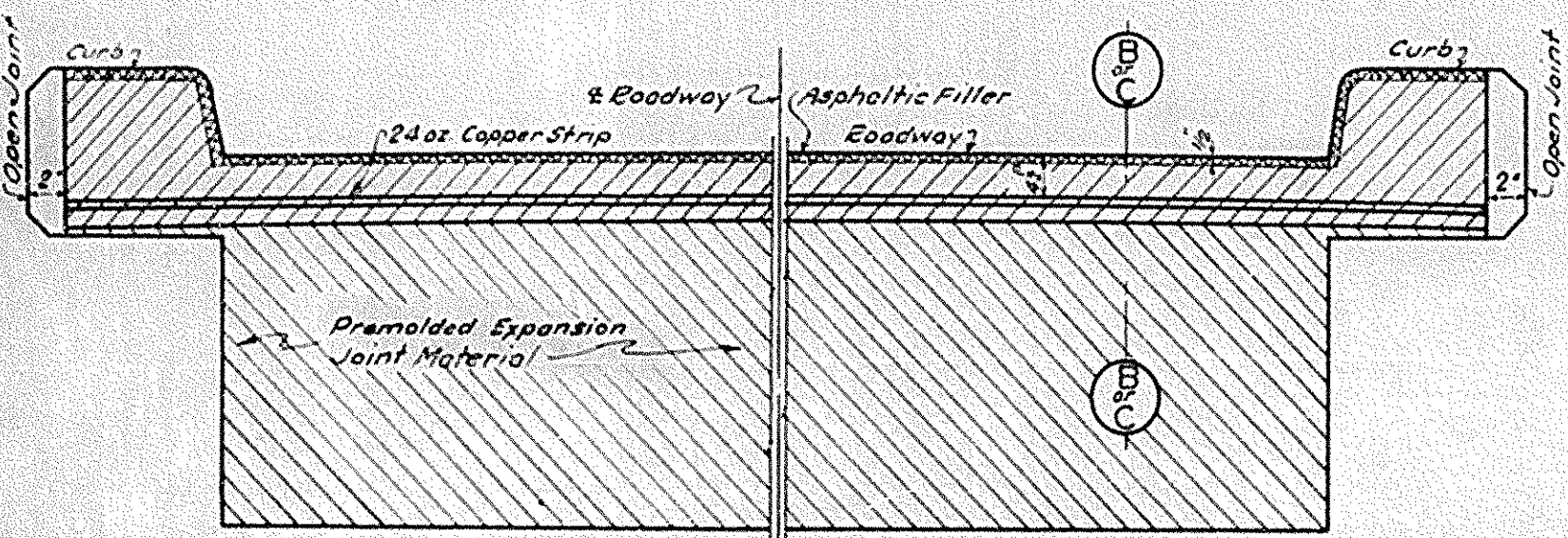
PART SECTION C-C

Dimension A shown on Drawings (On all skewed Spans)

NOTE: Lower section of copper strip is placed first, just prior to placing upper section of copper strip paint lower section with PAC-7 along all areas of contact, to provide additional seal. Cost of this work shall be included in the unit price bid for Class A Concrete.

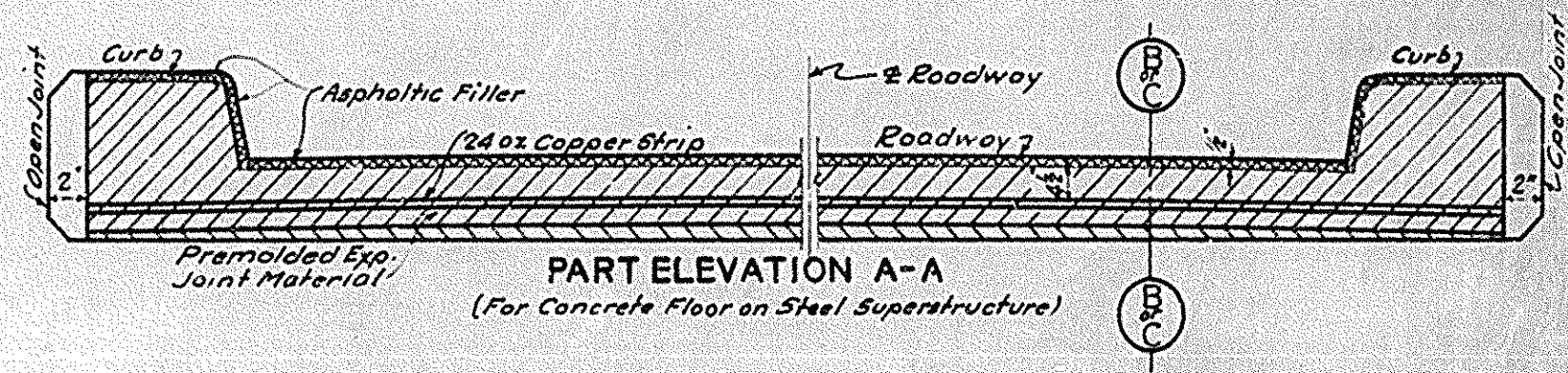


PART PLAN E-E



PART ELEVATION A-A

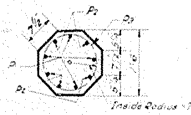
NOTE: Premolded Expansion Joint Material of the thickness shown on plans to be used in joint over area shown as shaded above. Joint to be left open over unshaded areas.



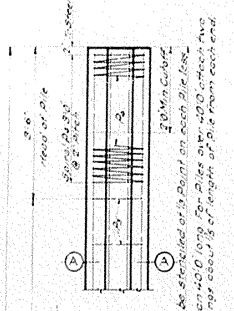
PART ELEVATION A-A
(For Concrete Floor on Steel Superstructure)

REVISIONS AND REVISIONS
 DATE BY REASON
 11/1/58 T.O. W. L. 1
 10/1/58 T.O. W. L. 1
 9/1/58 T.O. W. L. 1
 8/1/58 T.O. W. L. 1
 7/1/58 T.O. W. L. 1
 6/1/58 T.O. W. L. 1
 5/1/58 T.O. W. L. 1
 4/1/58 T.O. W. L. 1
 3/1/58 T.O. W. L. 1
 2/1/58 T.O. W. L. 1
 1/1/58 T.O. W. L. 1
 12/1/57 T.O. W. L. 1
 11/1/57 T.O. W. L. 1
 10/1/57 T.O. W. L. 1
 9/1/57 T.O. W. L. 1
 8/1/57 T.O. W. L. 1
 7/1/57 T.O. W. L. 1
 6/1/57 T.O. W. L. 1
 5/1/57 T.O. W. L. 1
 4/1/57 T.O. W. L. 1
 3/1/57 T.O. W. L. 1
 2/1/57 T.O. W. L. 1
 1/1/57 T.O. W. L. 1
 12/1/56 T.O. W. L. 1
 11/1/56 T.O. W. L. 1
 10/1/56 T.O. W. L. 1
 9/1/56 T.O. W. L. 1
 8/1/56 T.O. W. L. 1
 7/1/56 T.O. W. L. 1
 6/1/56 T.O. W. L. 1
 5/1/56 T.O. W. L. 1
 4/1/56 T.O. W. L. 1
 3/1/56 T.O. W. L. 1
 2/1/56 T.O. W. L. 1
 1/1/56 T.O. W. L. 1
 12/1/55 T.O. W. L. 1
 11/1/55 T.O. W. L. 1
 10/1/55 T.O. W. L. 1
 9/1/55 T.O. W. L. 1
 8/1/55 T.O. W. L. 1
 7/1/55 T.O. W. L. 1
 6/1/55 T.O. W. L. 1
 5/1/55 T.O. W. L. 1
 4/1/55 T.O. W. L. 1
 3/1/55 T.O. W. L. 1
 2/1/55 T.O. W. L. 1
 1/1/55 T.O. W. L. 1
 12/1/54 T.O. W. L. 1
 11/1/54 T.O. W. L. 1
 10/1/54 T.O. W. L. 1
 9/1/54 T.O. W. L. 1
 8/1/54 T.O. W. L. 1
 7/1/54 T.O. W. L. 1
 6/1/54 T.O. W. L. 1
 5/1/54 T.O. W. L. 1
 4/1/54 T.O. W. L. 1
 3/1/54 T.O. W. L. 1
 2/1/54 T.O. W. L. 1
 1/1/54 T.O. W. L. 1
 12/1/53 T.O. W. L. 1
 11/1/53 T.O. W. L. 1
 10/1/53 T.O. W. L. 1
 9/1/53 T.O. W. L. 1
 8/1/53 T.O. W. L. 1
 7/1/53 T.O. W. L. 1
 6/1/53 T.O. W. L. 1
 5/1/53 T.O. W. L. 1
 4/1/53 T.O. W. L. 1
 3/1/53 T.O. W. L. 1
 2/1/53 T.O. W. L. 1
 1/1/53 T.O. W. L. 1
 12/1/52 T.O. W. L. 1
 11/1/52 T.O. W. L. 1
 10/1/52 T.O. W. L. 1
 9/1/52 T.O. W. L. 1
 8/1/52 T.O. W. L. 1
 7/1/52 T.O. W. L. 1
 6/1/52 T.O. W. L. 1
 5/1/52 T.O. W. L. 1
 4/1/52 T.O. W. L. 1
 3/1/52 T.O. W. L. 1
 2/1/52 T.O. W. L. 1
 1/1/52 T.O. W. L. 1
 12/1/51 T.O. W. L. 1
 11/1/51 T.O. W. L. 1
 10/1/51 T.O. W. L. 1
 9/1/51 T.O. W. L. 1
 8/1/51 T.O. W. L. 1
 7/1/51 T.O. W. L. 1
 6/1/51 T.O. W. L. 1
 5/1/51 T.O. W. L. 1
 4/1/51 T.O. W. L. 1
 3/1/51 T.O. W. L. 1
 2/1/51 T.O. W. L. 1
 1/1/51 T.O. W. L. 1
 12/1/50 T.O. W. L. 1
 11/1/50 T.O. W. L. 1
 10/1/50 T.O. W. L. 1
 9/1/50 T.O. W. L. 1
 8/1/50 T.O. W. L. 1
 7/1/50 T.O. W. L. 1
 6/1/50 T.O. W. L. 1
 5/1/50 T.O. W. L. 1
 4/1/50 T.O. W. L. 1
 3/1/50 T.O. W. L. 1
 2/1/50 T.O. W. L. 1
 1/1/50 T.O. W. L. 1
 12/1/49 T.O. W. L. 1
 11/1/49 T.O. W. L. 1
 10/1/49 T.O. W. L. 1
 9/1/49 T.O. W. L. 1
 8/1/49 T.O. W. L. 1
 7/1/49 T.O. W. L. 1
 6/1/49 T.O. W. L. 1
 5/1/49 T.O. W. L. 1
 4/1/49 T.O. W. L. 1
 3/1/49 T.O. W. L. 1
 2/1/49 T.O. W. L. 1
 1/1/49 T.O. W. L. 1
 12/1/48 T.O. W. L. 1
 11/1/48 T.O. W. L. 1
 10/1/48 T.O. W. L. 1
 9/1/48 T.O. W. L. 1
 8/1/48 T.O. W. L. 1
 7/1/48 T.O. W. L. 1
 6/1/48 T.O. W. L. 1
 5/1/48 T.O. W. L. 1
 4/1/48 T.O. W. L. 1
 3/1/48 T.O. W. L. 1
 2/1/48 T.O. W. L. 1
 1/1/48 T.O. W. L. 1
 12/1/47 T.O. W. L. 1
 11/1/47 T.O. W. L. 1
 10/1/47 T.O. W. L. 1
 9/1/47 T.O. W. L. 1
 8/1/47 T.O. W. L. 1
 7/1/47 T.O. W. L. 1
 6/1/47 T.O. W. L. 1
 5/1/47 T.O. W. L. 1
 4/1/47 T.O. W. L. 1
 3/1/47 T.O. W. L. 1
 2/1/47 T.O. W. L. 1
 1/1/47 T.O. W. L. 1
 12/1/46 T.O. W. L. 1
 11/1/46 T.O. W. L. 1
 10/1/46 T.O. W. L. 1
 9/1/46 T.O. W. L. 1
 8/1/46 T.O. W. L. 1
 7/1/46 T.O. W. L. 1
 6/1/46 T.O. W. L. 1
 5/1/46 T.O. W. L. 1
 4/1/46 T.O. W. L. 1
 3/1/46 T.O. W. L. 1
 2/1/46 T.O. W. L. 1
 1/1/46 T.O. W. L. 1
 12/1/45 T.O. W. L. 1
 11/1/45 T.O. W. L. 1
 10/1/45 T.O. W. L. 1
 9/1/45 T.O. W. L. 1
 8/1/45 T.O. W. L. 1
 7/1/45 T.O. W. L. 1
 6/1/45 T.O. W. L. 1
 5/1/45 T.O. W. L. 1
 4/1/45 T.O. W. L. 1
 3/1/45 T.O. W. L. 1
 2/1/45 T.O. W. L. 1
 1/1/45 T.O. W. L. 1
 12/1/44 T.O. W. L. 1
 11/1/44 T.O. W. L. 1
 10/1/44 T.O. W. L. 1
 9/1/44 T.O. W. L. 1
 8/1/44 T.O. W. L. 1
 7/1/44 T.O. W. L. 1
 6/1/44 T.O. W. L. 1
 5/1/44 T.O. W. L. 1
 4/1/44 T.O. W. L. 1
 3/1/44 T.O. W. L. 1
 2/1/44 T.O. W. L. 1
 1/1/44 T.O. W. L. 1
 12/1/43 T.O. W. L. 1
 11/1/43 T.O. W. L. 1
 10/1/43 T.O. W. L. 1
 9/1/43 T.O. W. L. 1
 8/1/43 T.O. W. L. 1
 7/1/43 T.O. W. L. 1
 6/1/43 T.O. W. L. 1
 5/1/43 T.O. W. L. 1
 4/1/43 T.O. W. L. 1
 3/1/43 T.O. W. L. 1
 2/1/43 T.O. W. L. 1
 1/1/43 T.O. W. L. 1
 12/1/42 T.O. W. L. 1
 11/1/42 T.O. W. L. 1
 10/1/42 T.O. W. L. 1
 9/1/42 T.O. W. L. 1
 8/1/42 T.O. W. L. 1
 7/1/42 T.O. W. L. 1
 6/1/42 T.O. W. L. 1
 5/1/42 T.O. W. L. 1
 4/1/42 T.O. W. L. 1
 3/1/42 T.O. W. L. 1
 2/1/42 T.O. W. L. 1
 1/1/42 T.O. W. L. 1
 12/1/41 T.O. W. L. 1
 11/1/41 T.O. W. L. 1
 10/1/41 T.O. W. L. 1
 9/1/41 T.O. W. L. 1
 8/1/41 T.O. W. L. 1
 7/1/41 T.O. W. L. 1
 6/1/41 T.O. W. L. 1
 5/1/41 T.O. W. L. 1
 4/1/41 T.O. W. L. 1
 3/1/41 T.O. W. L. 1
 2/1/41 T.O. W. L. 1
 1/1/41 T.O. W. L. 1
 12/1/40 T.O. W. L. 1
 11/1/40 T.O. W. L. 1
 10/1/40 T.O. W. L. 1
 9/1/40 T.O. W. L. 1
 8/1/40 T.O. W. L. 1
 7/1/40 T.O. W. L. 1
 6/1/40 T.O. W. L. 1
 5/1/40 T.O. W. L. 1
 4/1/40 T.O. W. L. 1
 3/1/40 T.O. W. L. 1
 2/1/40 T.O. W. L. 1
 1/1/40 T.O. W. L. 1
 12/1/39 T.O. W. L. 1
 11/1/39 T.O. W. L. 1
 10/1/39 T.O. W. L. 1
 9/1/39 T.O. W. L. 1
 8/1/39 T.O. W. L. 1
 7/1/39 T.O. W. L. 1
 6/1/39 T.O. W. L. 1
 5/1/39 T.O. W. L. 1
 4/1/39 T.O. W. L. 1
 3/1/39 T.O. W. L. 1
 2/1/39 T.O. W. L. 1
 1/1/39 T.O. W. L. 1
 12/1/38 T.O. W. L. 1
 11/1/38 T.O. W. L. 1
 10/1/38 T.O. W. L. 1
 9/1/38 T.O. W. L. 1
 8/1/38 T.O. W. L. 1
 7/1/38 T.O. W. L. 1
 6/1/38 T.O. W. L. 1
 5/1/38 T.O. W. L. 1
 4/1/38 T.O. W. L. 1
 3/1/38 T.O. W. L. 1
 2/1/38 T.O. W. L. 1
 1/1/38 T.O. W. L. 1
 12/1/37 T.O. W. L. 1
 11/1/37 T.O. W. L. 1
 10/1/37 T.O. W. L. 1
 9/1/37 T.O. W. L. 1
 8/1/37 T.O. W. L. 1
 7/1/37 T.O. W. L. 1
 6/1/37 T.O. W. L. 1
 5/1/37 T.O. W. L. 1
 4/1/37 T.O. W. L. 1
 3/1/37 T.O. W. L. 1
 2/1/37 T.O. W. L. 1
 1/1/37 T.O. W. L. 1
 12/1/36 T.O. W. L. 1
 11/1/36 T.O. W. L. 1
 10/1/36 T.O. W. L. 1
 9/1/36 T.O. W. L. 1
 8/1/36 T.O. W. L. 1
 7/1/36 T.O. W. L. 1
 6/1/36 T.O. W. L. 1
 5/1/36 T.O. W. L. 1
 4/1/36 T.O. W. L. 1
 3/1/36 T.O. W. L. 1
 2/1/36 T.O. W. L. 1
 1/1/36 T.O. W. L. 1
 12/1/35 T.O. W. L. 1
 11/1/35 T.O. W. L. 1
 10/1/35 T.O. W. L. 1
 9/1/35 T.O. W. L. 1
 8/1/35 T.O. W. L. 1
 7/1/35 T.O. W. L. 1
 6/1/35 T.O. W. L. 1
 5/1/35 T.O. W. L. 1
 4/1/35 T.O. W. L. 1
 3/1/35 T.O. W. L. 1
 2/1/35 T.O. W. L. 1
 1/1/35 T.O. W. L. 1
 12/1/34 T.O. W. L. 1
 11/1/34 T.O. W. L. 1
 10/1/34 T.O. W. L. 1
 9/1/34 T.O. W. L. 1
 8/1/34 T.O. W. L. 1
 7/1/34 T.O. W. L. 1
 6/1/34 T.O. W. L. 1
 5/1/34 T.O. W. L. 1
 4/1/34 T.O. W. L. 1
 3/1/34 T.O. W. L. 1
 2/1/34 T.O. W. L. 1
 1/1/34 T.O. W. L. 1
 12/1/33 T.O. W. L. 1
 11/1/33 T.O. W. L. 1
 10/1/33 T.O. W. L. 1
 9/1/33 T.O. W. L. 1
 8/1/33 T.O. W. L. 1
 7/1/33 T.O. W. L. 1
 6/1/33 T.O. W. L. 1
 5/1/33 T.O. W. L. 1
 4/1/33 T.O. W. L. 1
 3/1/33 T.O. W. L. 1
 2/1/33 T.O. W. L. 1
 1/1/33 T.O. W. L. 1
 12/1/32 T.O. W. L. 1
 11/1/32 T.O. W. L. 1
 10/1/32 T.O. W. L. 1
 9/1/32 T.O. W. L. 1
 8/1/32 T.O. W. L. 1
 7/1/32 T.O. W. L. 1
 6/1/32 T.O. W. L. 1
 5/1/32 T.O. W. L. 1
 4/1/32 T.O. W. L. 1
 3/1/32 T.O. W. L. 1
 2/1/32 T.O. W. L. 1
 1/1/32 T.O. W. L. 1
 12/1/31 T.O. W. L. 1
 11/1/31 T.O. W. L. 1
 10/1/31 T.O. W. L. 1
 9/1/31 T.O. W. L. 1
 8/1/31 T.O. W. L. 1
 7/1/31 T.O. W. L. 1
 6/1/31 T.O. W. L. 1
 5/1/31 T.O. W. L. 1
 4/1/31 T.O. W. L. 1
 3/1/31 T.O. W. L. 1
 2/1/31 T.O. W. L. 1
 1/1/31 T.O. W. L. 1
 12/1/30 T.O. W. L. 1
 11/1/30 T.O. W. L. 1
 10/1/30 T.O. W. L. 1
 9/1/30 T.O. W. L. 1
 8/1/30 T.O. W. L. 1
 7/1/30 T.O. W. L. 1
 6/1/30 T.O. W. L. 1
 5/1/30 T.O. W. L. 1
 4/1/30 T.O. W. L. 1
 3/1/30 T.O. W. L. 1
 2/1/30 T.O. W. L. 1
 1/1/30 T.O. W. L. 1
 12/1/29 T.O. W. L. 1
 11/1/29 T.O. W. L. 1
 10/1/29 T.O. W. L. 1
 9/1/29 T.O. W. L. 1
 8/1/29 T.O. W. L. 1
 7/1/29 T.O. W. L. 1
 6/1/29 T.O. W. L. 1
 5/1/29 T.O. W. L. 1
 4/1/29 T.O. W. L. 1
 3/1/29 T.O. W. L. 1
 2/1/29 T.O. W. L. 1
 1/1/29 T.O. W. L. 1
 12/1/28 T.O. W. L. 1
 11/1/28 T.O. W. L. 1
 10/1/28 T.O. W. L. 1
 9/1/28 T.O. W. L. 1
 8/1/28 T.O. W. L. 1
 7/1/28 T.O. W. L. 1
 6/1/28 T.O. W. L. 1
 5/1/28 T.O. W. L. 1
 4/1/28 T.O. W. L. 1
 3/1/28 T.O. W. L. 1
 2/1/28 T.O. W. L. 1
 1/1/28 T.O. W. L. 1
 12/1/27 T.O. W. L. 1
 11/1/27 T.O. W. L. 1
 10/1/27 T.O. W. L. 1
 9/1/27 T.O. W. L. 1
 8/1/27 T.O. W. L. 1
 7/1/27 T.O. W. L. 1
 6/1/27 T.O. W. L. 1
 5/1/27 T.O. W. L. 1
 4/1/27 T.O. W. L. 1
 3/1/27 T.O. W. L. 1
 2/1/27 T.O. W. L. 1
 1/1/27 T.O. W. L. 1
 12/1/26 T.O. W. L. 1
 11/1/26 T.O. W. L. 1
 10/1/26 T.O. W. L. 1
 9/1/26 T.O. W. L. 1
 8/1/26 T.O. W. L. 1
 7/1/26 T.O. W. L. 1
 6/1/26 T.O. W. L. 1
 5/1/26 T.O. W. L. 1
 4/1/26 T.O. W. L. 1
 3/1/26 T.O. W. L. 1
 2/1/26 T.O. W. L. 1
 1/1/26 T.O. W. L. 1
 12/1/25 T.O. W. L. 1
 11/1/25 T.O. W. L. 1
 10/1/25 T.O. W. L. 1
 9/1/25 T.O. W. L. 1
 8/1/25 T.O. W. L. 1
 7/1/25 T.O. W. L. 1
 6/1/25 T.O. W. L. 1
 5/1/25 T.O. W. L. 1
 4/1/25 T.O. W. L. 1
 3/1/25 T.O. W. L. 1
 2/1/25 T.O. W. L. 1
 1/1/25 T.O. W. L. 1
 12/1/24 T.O. W. L. 1
 11/1/24 T.O. W. L. 1
 10/1/24 T.O. W. L. 1
 9/1/24 T.O. W. L. 1
 8/1/24 T.O. W. L. 1
 7/1/24 T.O. W. L. 1
 6/1/24 T.O. W. L. 1
 5/1/24 T.O. W. L. 1
 4/1/24 T.O. W. L. 1
 3/1/24 T.O. W. L. 1
 2/1/24 T.O. W. L. 1
 1/1/24 T.O. W. L. 1
 12/1/23 T.O. W. L. 1
 11/1/23 T.O. W. L. 1
 10/1/23 T.O. W. L. 1
 9/1/23 T.O. W. L. 1
 8/1/23 T.O. W. L. 1
 7/1/23 T.O. W. L. 1
 6/1/23 T.O. W. L. 1
 5/1/23 T.O. W. L. 1
 4/1/23 T.O. W. L. 1
 3/1/23 T.O. W. L. 1
 2/1/23 T.O. W. L. 1
 1/1/23 T.O. W. L. 1
 12/1/22 T.O. W. L. 1
 11/1/22 T.O. W. L. 1
 10/1/22 T.O. W. L. 1
 9/1/22 T.O. W. L. 1
 8/1/22 T.O. W. L. 1
 7/1/22 T.O. W. L. 1
 6/1/22 T.O. W. L. 1
 5/1/22 T.O. W. L. 1
 4/1/22 T.O. W. L. 1
 3/1/22 T.O. W. L. 1
 2/1/22 T.O. W. L. 1
 1/1/22 T.O. W. L. 1
 12/1/21 T.O. W. L. 1
 11/1/21 T.O. W. L. 1
 10/1/21 T.O. W. L. 1
 9/1/21 T.O. W. L. 1
 8/1/21 T.O. W. L. 1
 7/1/21 T.O. W. L. 1
 6/1/21 T.O. W. L. 1
 5/1/21 T.O. W. L. 1
 4/1/21 T.O. W. L. 1
 3/1/21 T.O. W. L. 1
 2/1/21 T.O. W. L. 1
 1/1/21 T.O. W. L. 1
 12/1/20 T.O. W. L. 1
 11/1/20 T.O. W. L. 1
 10/1/20 T.O. W. L. 1
 9/1/20 T.O. W. L. 1
 8/1/20 T.O. W. L. 1
 7/1/20 T.O. W. L. 1
 6/1/20 T.O. W. L. 1
 5/1/20 T.O. W. L. 1
 4/1/20 T.O. W. L. 1
 3/1/20 T.O. W. L. 1
 2/1/20 T.O. W. L. 1
 1/1/20 T.O. W. L. 1
 12/1/19 T.O. W. L. 1
 11/1/19 T.O. W. L. 1
 10/1/19 T.O. W. L. 1
 9/1/19 T.O. W. L. 1
 8/1/19 T.O. W. L. 1
 7/1/19 T.O. W. L. 1
 6/1/19 T.O. W. L. 1
 5/1/19 T.O. W. L. 1
 4/1/19 T.O. W. L. 1
 3/1/19 T.O. W. L. 1
 2/1/19 T.O. W. L. 1
 1/1/19 T.O. W. L. 1
 12/1/18 T.O. W. L. 1
 11/1/18 T.O. W. L. 1
 10/1/18 T.O. W. L. 1
 9/1/18 T.O. W. L. 1
 8/1/18 T.O. W. L. 1
 7/1/18 T.O. W. L. 1
 6/1/18 T.O. W. L. 1
 5/1/18 T.O. W. L. 1
 4/1/18 T.O. W. L. 1
 3/1/18 T.O. W. L. 1
 2/1/18 T.O. W. L. 1
 1/1/18 T.O. W. L. 1
 12/1/17 T.O. W. L. 1
 11/1/17 T.O. W. L. 1
 10/1/17 T.O. W. L. 1
 9/1/17 T.O. W. L. 1
 8/1/17 T.O. W. L. 1
 7/1/17 T.O. W. L. 1
 6/1/17 T.O. W. L. 1
 5/1/17 T.O. W. L. 1
 4/1/17 T.O. W. L. 1
 3/1/17 T.O. W. L. 1
 2/1/17 T.O. W. L. 1
 1/1/17 T.O. W. L. 1
 12/1/16 T.O. W. L. 1
 11/1/16 T.O.

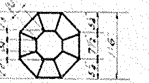
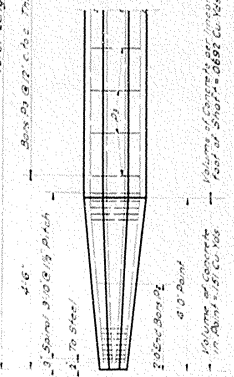
REV.	DATE	BY	CHKD.	APP'D.
1				



SECTION A-A
USE FOR PILE LENGTHS OVER 55 IN ORDER TO COMPLY WITH SPEC. ARTICLE 622.H.3



SECTION A-A
USE FOR PILE LENGTHS 20 TO 55 ONLY



VIEW B-B

H	TABLE OF DIMENSIONS AND QUANTITIES											
	BILL AND TYPES OF REINFORCEMENT FOR ONE PILE ONLY											
CONCRETE CLASS D	REINFORCEMENT	LENGTH a		LENGTH a		NUMBER	3-1/2" Dia. 3/8" Bars	4-1/2" Dia. 3/8" Bars	4-1/2" Dia. 3/8" Bars	4-1/2" Dia. 3/8" Bars	4-1/2" Dia. 3/8" Bars	4-1/2" Dia. 3/8" Bars
		FT	IN	FT	IN							
20	126	220	15	8	15	10	17	10	15	10	17	10
22	120	216	21	8	17	10	19	10	17	10	19	10
24	153	273	23	8	19	10	21	10	19	10	21	10
26	167	320	25	8	21	10	23	10	21	10	23	10
28	181	366	27	8	23	10	25	10	23	10	25	10
30	195	412	29	8	25	10	27	10	25	10	27	10
32	208	459	31	8	27	10	29	10	27	10	29	10
34	222	506	33	8	29	10	31	10	29	10	31	10
36	236	552	35	8	31	10	33	10	31	10	33	10
38	250	599	37	8	33	10	35	10	33	10	35	10
40	264	646	39	8	35	10	37	10	35	10	37	10
42	277	692	41	8	37	10	39	10	37	10	39	10
44	291	738	43	8	39	10	41	10	39	10	41	10
46	305	785	45	8	41	10	43	10	41	10	43	10
48	318	831	47	8	43	10	45	10	43	10	45	10
50	333	878	49	8	45	10	47	10	45	10	47	10
52	347	924	51	8	47	10	49	10	47	10	49	10
54	361	971	53	8	49	10	51	10	49	10	51	10
56	375	1017	55	8	51	10	53	10	51	10	53	10
58	389	1064	57	8	53	10	55	10	53	10	55	10
60	403	1110	59	8	55	10	57	10	55	10	57	10
62	417	1157	61	8	57	10	59	10	57	10	59	10
64	431	1203	63	8	59	10	61	10	59	10	61	10
66	445	1250	65	8	61	10	63	10	61	10	63	10
68	459	1296	67	8	63	10	65	10	63	10	65	10

GENERAL NOTE

SPECIFICATIONS: Kentucky Department of Highways
CONCRETE:— Class D concrete shall be used in Piles
REINFORCEMENT:— The cost of reinforcement shall be included in the price bid per linear foot of Piles. Concrete Piles must not be damaged below cutoff elevation. Concrete and Spiral above cutoff elevation to remain and project into structure above. These Bars shall be bent in field if necessary to maintain clearance shown on Bridge details.

PILING:— All Piles shall have a minimum penetration of 20' unless solid rock is encountered. Piles shall be driven to refusal or to support a minimum load of 50 Tons per pile.

TEST PILES:— Test Piles shall be driven where designated on Bridge Plans to determine the length of Piles required. All Test Piles shall be located so they will act as a part of the piling system. No payment will be made for pile cutoff except as provided for in Specifications.

PILE CUTOFF:— Deformation of reinforcing bars shall conform to A.S.T.M. A-305 Current Specification.

COMMONWEALTH OF KENTUCKY
 DEPARTMENT OF HIGHWAYS
STANDARD
18" REINFORCED
CONCRETE PILE

BRIDGE